
Who are The Christadelphians?

The Christadelphians (*Greek for 'Brethren in Christ'*) are a world-wide community of disciples of Jesus Christ, whose fellowship is based on a common understanding of the Bible and a commitment to living the principles contained therein to the glory of Almighty God and His Son.

Christadelphian Essential Beliefs

- ✓ The whole Bible is God's inspired book.
- ✓ There is one God – Creator and Sustainer of everything
- ✓ Jesus Christ is God's Son, born with our nature to be Saviour of mankind.
- ✓ The Holy Spirit is God's power.
- ✓ Man in mortal and sinful, in need of salvation and unable to save himself.
- ✓ God's plan is to fill the earth with His glory.
- ✓ The only hope after death is resurrection.
- ✓ Jesus will return soon, to raise the dead and judge the believers and the world.
- ✓ He will reward the faithful with everlasting life in God's Kingdom on earth.
- ✓ Belief in the Gospel followed by baptism into Christ is essential for salvation.

For more information about *the Christadelphians*, visit one of the following websites:

- <http://www.christadelphia.org/belief.php>
- <https://www.thechristadelphian.com/about-us/christadelphian-beliefs/>

*"And this is life eternal, that they might know thee the only true God,
and Jesus Christ, whom thou hast sent."*

- John 17:3 -

Jesus Christ is coming to reign on earth – are you ready?



Him Who is Invisible

Music by: DO 2014

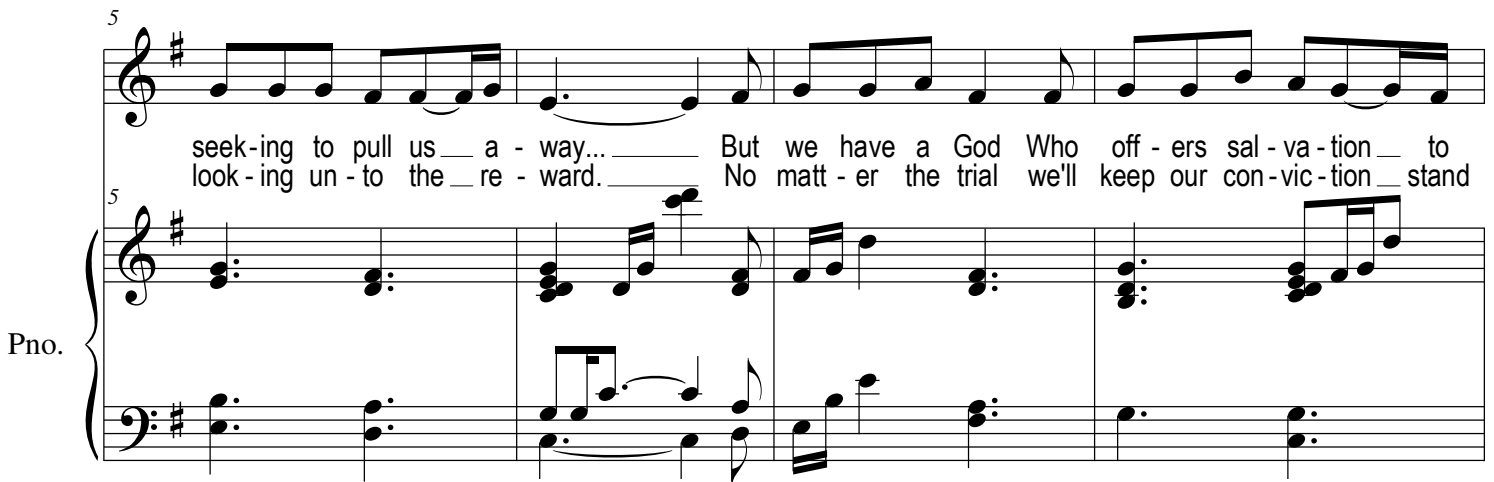
Voice



1. We live in a world that's full of temp - ta - tion
2. A - long - side our friends we'll suff - er a - fflic - tion

Piano

5

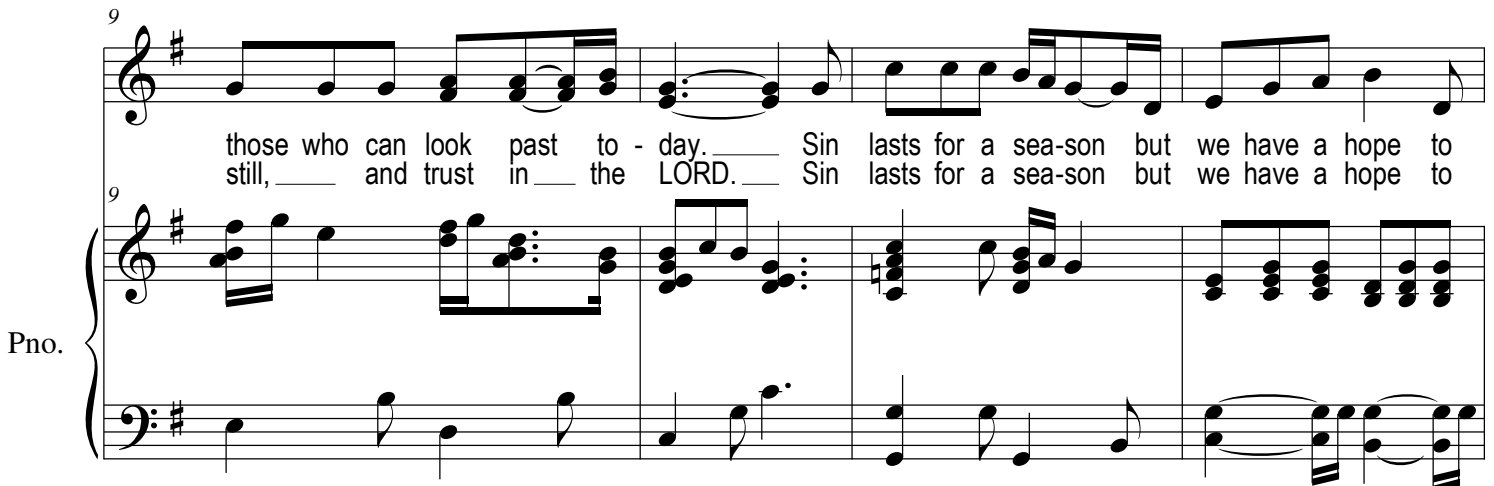


5

seek - ing to pull us a - way... But we have a God Who off - ers sal - va - tion to
look - ing un - to the re - ward. No matt - er the trial we'll keep our con - vic - tion stand

Pno.

9



9

those who can look past to - day. Sin lasts for a sea - son but we have a hope to
still, and trust in the LORD. Sin lasts for a sea - son but we have a hope to

Pno.

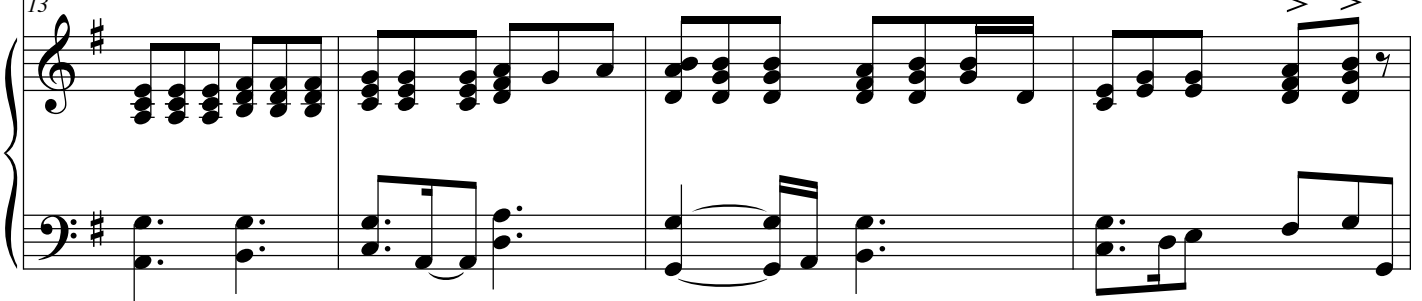
Him Who is Invisible

2
13



live for - ev - er, so we'll foll - ow our Mas - ter where - ev - er he leads us,
live for - ev - er,

Pno.

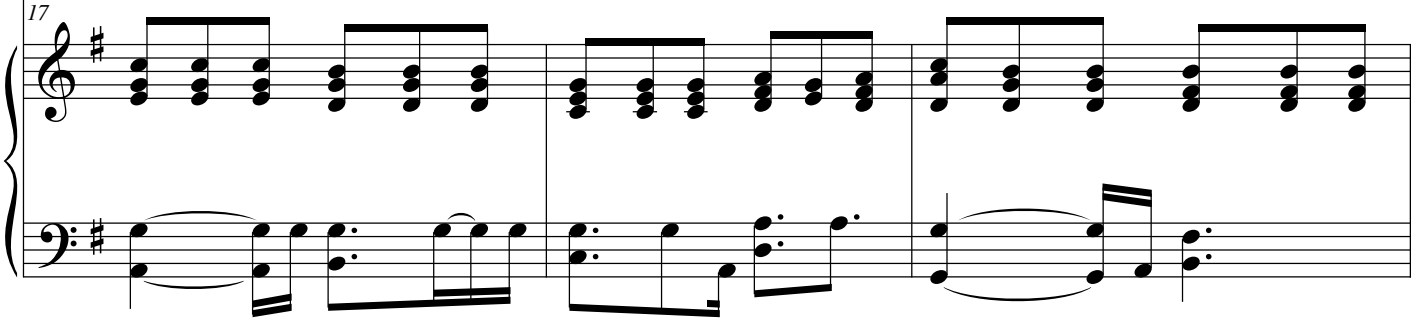


17



walk - ing by faith we will fin - ish the race! For - sak - ing earth's trea - sures, its

Pno.



20



cares and it plea - sures, we press on, be - liev - ing in Him Who is in - vi - si - ble.

Pno.



24

Who is in - vi - si - ble. A

Pno.

28

Sing to the LORD our sal - va - tion and song the horse and his ri - der are

Pno.

31

thrown in the sea, So we'll foll - ow our Mas - ter where - ev - er he leads us,

Pno.

34

walk-ing by faith we will fin-ish the race! For - sak - ing earth's trea-sures, its

Pno.

Detailed description: This system contains the first two measures of the piece. The vocal line (treble clef) starts with a quarter note G4, followed by quarter notes A4, B4, and C5. The piano accompaniment (grand staff) features a steady eighth-note bass line in the left hand and a chordal accompaniment in the right hand.

37

cares and it plea-sures, we press on, believ - ing in Him Who is in-

Pno.

Detailed description: This system contains the next two measures. The vocal line continues with quarter notes D5, E5, and F5. The piano accompaniment maintains its rhythmic pattern, with some chordal changes in the right hand.

40

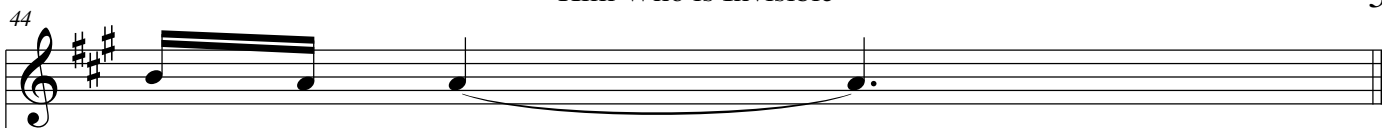
vi-si-ble. Who is in - vi-si-ble. Who is in-

Pno.

Detailed description: This system contains the final two measures. The vocal line features a long note G5 with a fermata, followed by quarter notes A5 and B5. The piano accompaniment concludes with a final chord in the right hand and a sustained bass note in the left hand.

Him Who is Invisible

44



vi - si - ble. _____

Pno.

44

